

Opus 37 Instrument Ranges

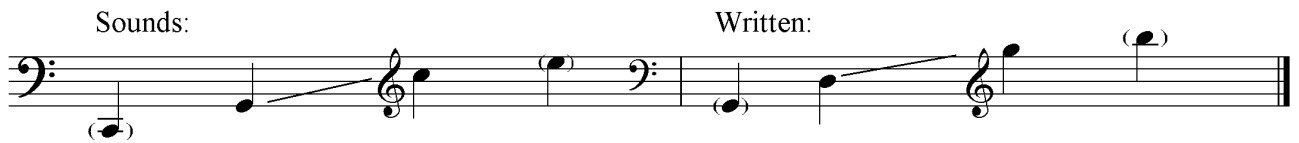
Note: The chart below presents standard ranges for instruments. Notes in parentheses show the outer limits of the register and should be used with care.

Bb TRUMPET

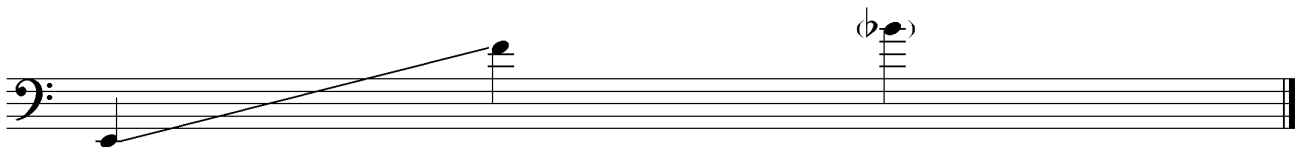


FRENCH HORN IN F

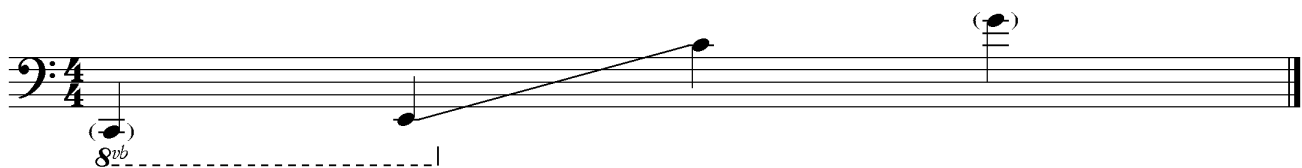
Horns are alto/tenor instruments, unlike trumpets. They are almost always written in treble clef and sound a fifth lower than written.



TROMBONE



TUBA



PERCUSSION

Timpani

Timpani are single tunable drums. They come in four (or occasionally five) sizes. Not all orchestras possess all drums. The drums may be retuned within their range, but allow 15-20" for each retuning. Glissandi (slides) may also be written within the range of each drum.

standard ranges:



Orchestral pitched percussion

Xylophone

standard range:



Glockenspiel

standard range:



Unpitched percussion

These may include snare drum, bass drum, tom-toms, wood blocks of various sizes, triangle, mounted cymbal(s), crash cymbals and other small unpitched percussion instruments. A good rule of thumb for their usage is "less is more", that is, don't overuse them. A little unpitched percussion goes a long way.

VOCAL RANGES

This diagram illustrates the vocal ranges for Soprano and Alto on a single musical staff. The staff is divided into two sections by a double bar line. The left section is labeled "Soprano optimum range" and shows a range from G4 to C5. The right section is labeled "Alto optimum range" and shows a range from C4 to G4. Four notes are marked as "(possible)": G4 (upward arrow), C5 (downward arrow), C4 (upward arrow), and G4 (downward arrow).

This diagram illustrates the vocal ranges for Tenor and Bass on a single musical staff. The staff is divided into two sections by a double bar line. The left section is labeled "Tenor optimum range" and shows a range from G3 to C4. The right section is labeled "Bass optimum range" and shows a range from G2 to C3. Four notes are marked as "(possible)": G3 (upward arrow), C4 (downward arrow), G2 (upward arrow), and C3 (downward arrow).